



# Data Architect Manager

MARINA (NINA) LITTLE

Table of Contents

1.0 - About Me..... 3

2.0 - The Road Map..... 5

3.0 - SWOT..... 6

4.0 - Key References..... 7

# 1.0 - About Me

## Nina Little



Data Architect Manager  
Work City/State: DFW, Tx

### Favorite Quote

Living the Dream

### Favorite IM Instigator

"Howdy!"

### Fluent Languages

English  
Spanish  
Spanglish

### Education

BS Information Technology  
w/Minor Data & Analytics  
Capella University

## Career History

### Lockheed Martin – Enterprise IT | 2019– Present

- MFC CDAO, Data Architect Manager | 2021 – Present
- RMS CDAO, Data Architect Associate Manager | 2021
- MFC CDAO, Data Engineering Lead | 2019 – 2021

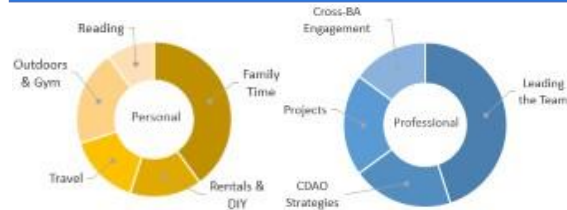
### Lockheed Martin – Missiles & Fire Control | 2016- 2019

- Global Security Chain, ERP Procurement Analyst

### Disys– ExxonMobil | 2007- 2016

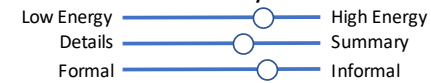
- SAP Business Intelligence Analytics Consultant

## Day in the Life



## Who am I

### Personality



Details  Summary

Formal  Informal

### Leadership Style

Autocratic  Democratic

Micro Manager  Macro Manager

Operational  Strategic

Not broke, don't fix  Fix it before it breaks

### Pet Peeves

Not my job  How can I help?

Passive Aggressive  Open & Direct

Pass the buck  Fall on your sword

Always done this way  Improve the process

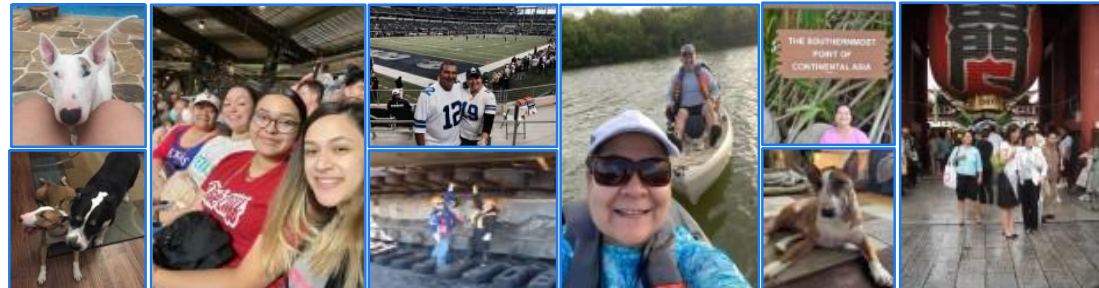
### Weakness

Charts/Pictures  Reading

Multi-task  Focused

Conversation  Emails

## Selfie/Groupie Mosaic



# Marina (Nina) Little

## Data Architect Manager



Nina.little@lmco.com



(817) 8082468

## Experience

### Lockheed Martin – Enterprise IT ('19-Current)

#### MFC CDAO – Data Architect Manager ('22)

- Responsible for the management of the MFC CDAO Analytics & Platform Team.
- Engaging with business and technology leaders to understand strategy, articulate solution options, evaluate tradeoffs, and influence key decisions.
- Increasing adoption of analytics within MFC by working with various stakeholders.

#### RMS CDAO- Data Architect Associate Manager ('21)

- Responsible for the management of the RMS CDAO Platform Strategy and Operations Team.
- Led the effort in stabilizing the Heritage Sikorsky(hSAC) Data Warehouse and identifying outages root cause by leveraging tools such as Dynatrace and Splunk.
- Managing the hSAC Data Warehouse Re-hosting Project, entailed migrating the hSAC DW from an IBM platform to LM Valley Forge Data Center. In support of the hSAC project, managed a team of Accenture managed services consultants.
- Implemented KPIs to drive and improve behaviors for Operations Support team.
- Leading the Modern Data Analytics initiative from an RMS perspective to help drive cross BA to business value metrics.

#### MFC CDAO – Data Engineering Lead ('19-'21)

- Led and supports adoption of development best practices such as agile methodologies.
- Led Analytics developers in designing and implementing data pipelines using technologies such as SAP HANA and TIBCO Data Virtualization.
- Led and develop SAP Business Objects Data Services jobs (BODS) to extract and transform data from various sources to be meet customer requirements.

### Lockheed Martin Missiles & Fire Ctrl ('16-'19)

#### Global Supply Chain (GSC) Operations – GSC ERP Analyst

- GSC Procurement provides Spend and Compliance reporting to the MFC organization.
- Provide a real-time reporting solution to complement the new Material Cost Estimating (MCE) Tool.

### Disys – ExxonMobil ('07-'16)

#### SAP Business Intelligence Analytics Consultant – Disys Consultant at ExxonMobil

- Spearheaded a worldwide global team of technical analyst to design/develop and implement analytics solution for various business units throughout the organization.

## Accomplishments

**Analytics:** Stabilized, grew and successfully turned around the RMS CDAO Platform & Operations Support team ('21) GSC KPI Development driving improved behaviors through better metrics ('16-'19)

Apriso Data pipelines re-engineered for ProdOps reporting ('20)

**Data Warehouse:** Stabilized Heritage Sikorsky Data Warehouse ('21)

**Processes:** Co-led MFC CDAO Service Central implement ('19)

## Skills & Strengths

**Proficient:** SAP MRP, Agile PM, Design Thinking, SQL, Visio, MS Access, Six Sigma, VersionOne, Change Mgt, Oagis, Cloud technologies

**Expert:** Tableau, Excel, Waterfall Proj Mgt, Procurement Systems, Customer Success, Microsoft Project, SharePoint, JIRA, Confluence, SAP BW, SAP HANA,

**Master:** Data Engineering, Data Optimization

## Education

### University

**BSIT w/Minor Data & Analytics** Capella University ('22)

### Certifications & Continued Education

**Oagis Lockheed Martin** ('21)

**Design Thinking** Lockheed Martin ('19)

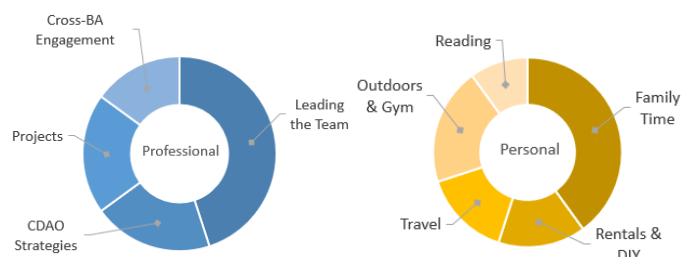
**AWS Cloud Foundation** Udemy ('20)

**SAP HANA 1.x openSAP** ('19)

**SAP HANA Pipeline** Lockheed Martin ('18)

**Facilitator** DDCI ('08)

## Day in the Life



## References

Available upon Request

## 2.0 - The Road Map



### 3.0 - SWOT

<b>Strengths (like to do / skills)</b> <ul style="list-style-type: none"><li>• Trustworthy</li><li>• Team leadership and communication Organizational design, business cases</li><li>• Analytics strategy &amp; data visualization techniques</li><li>• Procurement, cyber, operations, and manufacturing</li><li>• Data Architecting, Data Engineering and Data Analysis</li><li>• New projects/start-ups/business cases/trade study</li></ul>	<b>Weakness (areas of Personal Growth)</b> <ul style="list-style-type: none"><li>• The never-ending journey of growth in summarizing the details</li></ul>
<b>Opportunities (what's out there / interests)</b> <ul style="list-style-type: none"><li>• Increased level of organizational impact/business value with more formal portfolio management across more swim lanes</li></ul>	<b>Threats (What's at risk)</b> <ul style="list-style-type: none"><li>• Current project progress during transitions</li></ul>

## 4.0 - Key References

Vino Kingston  
LM Enterprise Operations  
EO Data Architect Senior Manager  
[vino.kingston@lmco.com](mailto:vino.kingston@lmco.com)  
972 603 2153

Michael Owen  
LM Enterprise Operations  
MFC Systems Engineering Director  
[michael.owen@lmco.com](mailto:michael.owen@lmco.com)  
607 751 6358

Jeff Bascle  
LM Enterprise Operations  
EO - IT Program Director  
[jeff.p.bascle@lmco.com](mailto:jeff.p.bascle@lmco.com)  
972 206 7410

Jeff Keesom  
LM Enterprise Operations  
RMS - Data Architect Senior Manager  
[jeff.keesom@lmco.com](mailto:jeff.keesom@lmco.com)  
585 397 1234